

**Theoretical  
Architecture Spine of  
Dual-Rhythm  
Architecture™**

Ten-Year Structural Integrity Framework

Founder & Author: 李宽续 (Li Kuanxu)

System Origin: February 26, 2026

Paradigm Edition: March 2, 2026

[dualrhythmsystems.com](http://dualrhythmsystems.com)

LICENSE: CC BY-NC-ND 4.0

© 2026 李宽续 Li Kuanxu | Kuanxuhome™ |

OFFICIAL SOVEREIGNTY LOCK-IN

# **Dual-Rhythm Architecture™**

**The Complete Theoretical Spine**

*(Designed for 10-Year Structural Integrity)*

# **I. THE FOUNDATIONAL PROBLEM**

## **1. The Acceleration Paradox**

AI increases:

- Output velocity
- Decision density
- Execution frequency
- Strategic optionality

But organizations remain:

- Biologically constrained
- Cognitively limited
- Socially interdependent
- Recovery-dependent

Core Tension:

Acceleration expands force.

Human systems have finite absorption capacity.

When force exceeds absorption,  
instability emerges.

---

## **2. The Structural Misdiagnosis**

Most organizations interpret instability as:

- Leadership weakness
- Cultural breakdown
- Communication failure
- Talent gaps

But these are symptoms.

The underlying issue is:

Rhythm imbalance under acceleration.

This reframes organizational instability  
from psychology  
to structural dynamics.

---

## **II. THE PRIMARY LAW**

### **The Structural Law of Stability**

Organizational stability under acceleration  
is governed by three interdependent forces:

**1. Execution Rhythm (ER)**

The rate and consistency of coordinated action.

**2. Pressure Regulation (PR)**

The system's ability to modulate load intensity.

**3. Recovery Integrity (RI)**

The organization's capacity to restore coherence after exertion.

These form:

## **Stability Triad Model™**

Stability is not the absence of pressure.

It is regulated oscillation.

---

## **The Executive Stability Formula™**

Instability Risk  $\propto$  Acceleration / Recovery

Integrity

Implications:

- Instability increases nonlinearly.
- Recovery degradation amplifies volatility.
- Output growth can mask rising structural fragility.

This becomes the book's scientific anchor.

---

# **III. THE SYSTEM SHIFT**

## **From Performance Competition To Rhythm Competition**

### **Industrial Era**

Compete on scale.

### **Digital Era**

Compete on speed and efficiency.

### **AI Era**

Compete on stability under acceleration.

Performance is visible.

Rhythm is structural.

Competitive advantage shifts  
from intensity  
to coherence.

---

# **IV. THE ARCHITECTURE LAYER**

## **Dual-Rhythm Architecture™**

Every stable accelerated system  
operates on two synchronized rhythms:

### **1. Performance Rhythm**

Generates force, output, expansion.

### **2. Stabilization Rhythm**

Absorbs pressure, restores coherence, protects  
endurance.

Failure modes:

- Performance without stabilization → burnout and fracture.
- Stabilization without performance → stagnation and decay.

Sustained advantage requires governance of both.

This defines:

**Organizational Rhythm Governance™  
(ORG™).**

A new management category.

---

## **V. THE OPERATING SYSTEM**

Dual-Rhythm Architecture™ becomes executable through five integrated engines.

---

## **1. Stability Triad Model™**

Diagnoses structural imbalance.

Predicts destabilization under acceleration.

---

## **2. Dual-Rhythm Architecture™ Canvas™**

Visual mapping of:

- ER variables
- PR variables
- RI variables
- Stress concentration zones
- Latent fracture points

One-page structural visibility.

---

### **3. Stability Index™ (The OSS Index™)**

Quantifies:

- Volatility exposure
- Rhythm asymmetry
- Recovery degradation
- Structural coherence score

Creates board-level measurability.

---

### **4. Rhythm Strategy Curve™**

Repositions organizations based on:

- Acceleration tolerance
- Stability strength
- Execution endurance

Shifts competitive framing.

---

## **5. Narrative Thread™**

Sequences transformation  
across a 12–24 month arc  
without structural shock.

Aligns executive rhythm  
during systemic change.

---

# **VI. THE TRANSFORMATION LOGIC**

## **The 12–24 Month Structural Arc**

Phase 1 — Diagnosis

Map instability variables.

Phase 2 — Stabilization

Protect recovery integrity.

### Phase 3 — Rhythm Alignment

Synchronize performance and stabilization cycles.

### Phase 4 — Endurance Scaling

Increase acceleration without volatility expansion.

This prevents:

- Shock-based transformation
  - Initiative abandonment
  - Executive turnover spikes
  - Cultural fatigue collapse
- 

## **VII. THE MEASUREMENT GAP**

Organizational Rhythm Governance™ (ORG™)  
is the governance discipline. Resonance is the

state achieved when dual rhythms are synchronized — the outcome of effective ORG™ deployment.

Currently measurable:

- Revenue growth
- Cost efficiency
- Innovation cycles
- Customer metrics

Currently unmeasured:

- Organizational rhythm stability
- Recovery degradation rate
- Volatility amplification risk
- Structural coherence index

This gap creates:

The Global Stability Vacuum.

Dual-Rhythm Architecture™

fills this vacuum.

---

# VIII. THE LONG-TERM INTELLECTUAL DEFENSIBILITY

Why this theory holds for a decade:

1. It is not AI-dependent.  
It is acceleration-dependent.
2. It applies across:
  - Corporations
  - Governments
  - Healthcare systems
  - Military organizations
  - Startups
  - Multinationals

3. It reframes management physics,  
not management fashion.
  4. It introduces measurable variables.
  5. It defines a new category (ORG™),  
not a temporary trend.
- 

## **IX. THE CATEGORY CREATION**

Organizational Rhythm Governance (ORG™)

Defines:

- Stability as a strategic asset
- Recovery as an executive metric
- Rhythm as a board-level responsibility

Enables:

- Certification pathways

- Diagnostic licensing
- Enterprise standards
- Executive accreditation

Moves from book → system → standard.

---

# **X. THE CORE INTELLECTUAL POSITION**

This is not:

- A productivity framework
- A leadership mindset book
- A cultural transformation manual
- An AI strategy guide

It is:

A structural operating system  
for governing stability under acceleration.

From Output Acceleration  
to Rhythm Stability.

---

# The Final Structural Summary

Problem:

Acceleration outpaces recovery.

Law:

Instability Risk  $\propto$  Acceleration / Recovery

Integrity.

Model:

Stability Triad (ER, PR, RI).

Architecture:

Dual-Rhythm Architecture™.

Operating System:

Five integrated engines.

Category:

Organizational Rhythm Governance (ORG™).

Competitive Advantage:

Coherence under pressure.

---

This is the ten-year spine.

It allows:

- Academic expansion
- Enterprise deployment
- Board adoption
- Certification ecosystem
- Global keynote positioning
- Research publication
- Consulting scalability

And most importantly:

It cannot collapse unless the physics of acceleration changes.

---

DUAL-RHYTHM ARCHITECTURE™

The Structural Leadership Control System

(Paradigm Edition)

The Stability Triad Model™

for Sustainable Performance in an AI-Driven  
World

Theoretical Architecture Spine of Dual-Rhythm  
Architecture™

Ten-Year Structural Integrity Framework

[dualrhythmsystems.com](http://dualrhythmsystems.com)

Organizational Rhythm Governance™ (ORG™)

[resonancegovernance.com](http://resonancegovernance.com)

Enterprise / AI System Stability™

[intrinsicsovereignty.com](https://intrinsicsovereignty.com)

Organizational Sync-Stability Index™ (The OSS Index™)

[theossindex.com](https://theossindex.com) | [organizationalsyncstability.com](https://organizationalsyncstability.com)

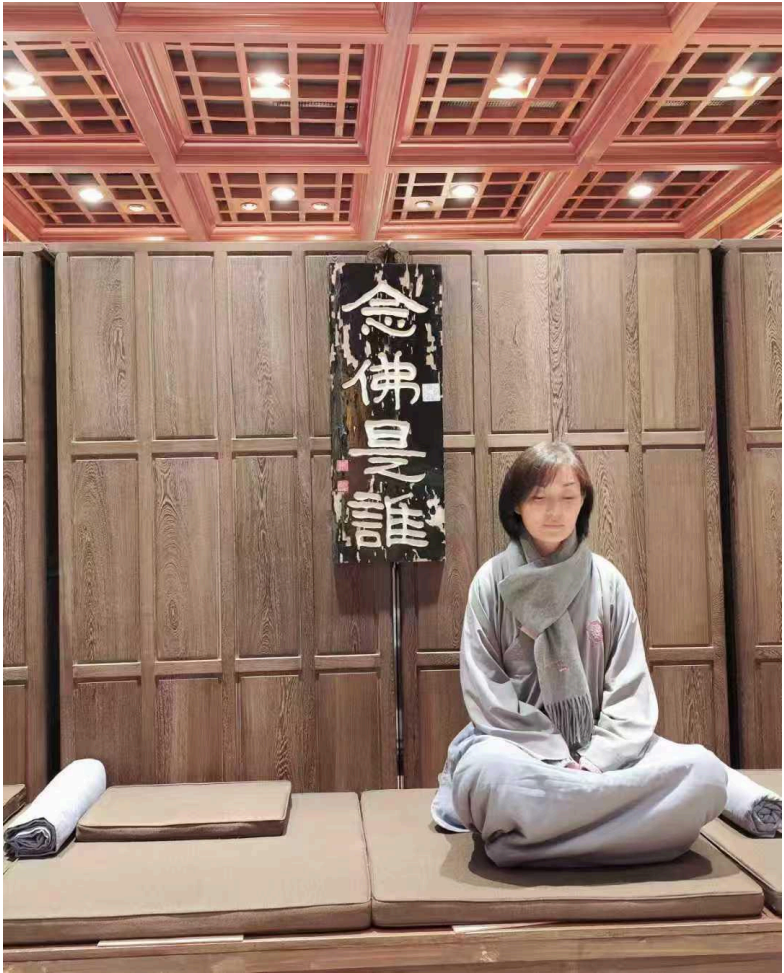
---

## **ABOUT THE AUTHOR**

Li Kuanxu (李宽续) is the founder of Dual-Rhythm Architecture™ and the Organizational Sync-Stability Index™ (The OSS Index™). He is the first to systematically propose "rhythm stability" as the competitive dimension of the AI era, translating Zen wisdom of intrinsic sovereignty into the engineering language of management physics.

Dual-Rhythm Architecture™ is a five-layer closed system — an indivisible whole in which each layer validates and completes the others.

Any partial extraction, remapping, or algorithmic restructuring necessarily destroys the integrity of the system and constitutes an unauthorized derivative work.



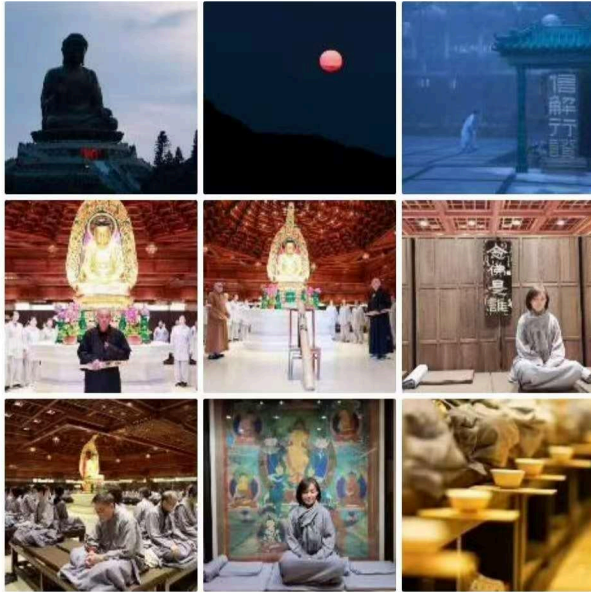
Zen\_Retreat\_Feb19-26\_2025\_Li\_Kuanxu.jpg

---



宽续

话头禅无字顿悟心法  
念佛是谁 参看话头  
直指人心 反观内照  
自净其意 明心见性  
自性若迷 福何可救  
穿越迷悟 转染成净  
万佛万福 人间净土



2025年2月27日 13:24



## **COPYRIGHT & LICENSE**

Dual-Rhythm Architecture™

The Structural Leadership Control System (Paradigm Edition)

Theoretical Architecture Spine of Dual-Rhythm Architecture™

Ten-Year Structural Integrity Framework

Founder & Author: 李宽续 (Li Kuanxu)

Created: March 2, 2026

© 2026 李宽续 Li Kuanxu | Kuanxuhome™

All Rights Reserved.

LICENSE: Creative Commons

Attribution-NonCommercial-NoDerivatives 4.0

International (CC BY-NC-ND 4.0)

This work is published under the Creative Commons Attribution-NonCommercial-NoDerivatives 4.0 International License. To view a copy of this license, visit

<https://creativecommons.org/licenses/by-nc-nd/4.0/>

---

## **COMMERCIAL LICENSING**

Any commercial use — including integration into enterprise systems, AI governance platforms, organizational operating models, consulting products, or SaaS tools — requires a separate paid license agreement with the author.

Contact:

[dualrhythmsystems.com](https://dualrhythmsystems.com) | [theossindex.com](https://theossindex.com) |

[resonancegovernance.com](https://resonancegovernance.com)

---

LICENSE: CC BY-NC-ND 4.0

© 2026 李宽续 Li Kuanxu | Kuanxuhome™ | OFFICIAL  
SOVEREIGNTY LOCK-IN